



Medium Chess Puzzle # 0049

By

G Bud Games
<https://gbud.in>

October 21, 2021

Contents

Medium Chess puzzle # 0049 - Gain queen	3
Medium chess puzzle 0049	3
Solution to medium chess puzzle 0049	4
Solution 1	4
Right moves for the solution to the medium chess puzzle 0049	7
Explanation for the moves	7
Categories of medium chess puzzle 0049	7
How to view the solution to medium chess puzzle 0049	8
How to get help for moves in the medium chess puzzle 0049	8
Play chess for free	10

List of Figures

1	Solve this medium chess puzzle 0049. Gain queen @ https://gbud.in/gr52gn2	3
2	Solve this medium chess puzzle online with solution @ https://gbud.in/gr52gn2	3
3	Initial board position of medium chess puzzle 0049	4
4	Rxf8+ - This sacrifice is an attraction as well as zugzwang move since this forces the king to move a vulnerable square	5
5	Kxf8 - King captures the rook as this is the only move available	5
6	Nxd7+ - In this knight fork, the knight attacks both the king and queen at the same time by giving a check	6
7	Ke7 - King moves closer to the knight	6
8	Nxb6 - Knight captures the hanging queen	7
9	Click the solution button to view solutions @ https://gbud.in/gr52gn2	8
10	Click the help button to get help on next move @ https://gbud.in/gr52gn2	9
11	Solve more medium puzzles @ https://gbud.in/chsmdpz	9
12	Solve other puzzles @ https://gbud.in/chsgppz	9
13	Play chess online for free. Solve puzzles and play with friends	10
14	Solve this puzzle online by scanning this QR code or go to the link below	11

Medium Chess puzzle # 0049 - Gain queen

Solve this medium chess puzzle and improve your chess games through improvement of your chess strategies and chess tactics.

Puzzle No : 0049

Difficulty level : medium

Description : Gain queen

Next Move : White

Player level : Intermediate

Short URL for puzzle : <https://gbud.in/gr52gn2>

Medium chess puzzle 0049

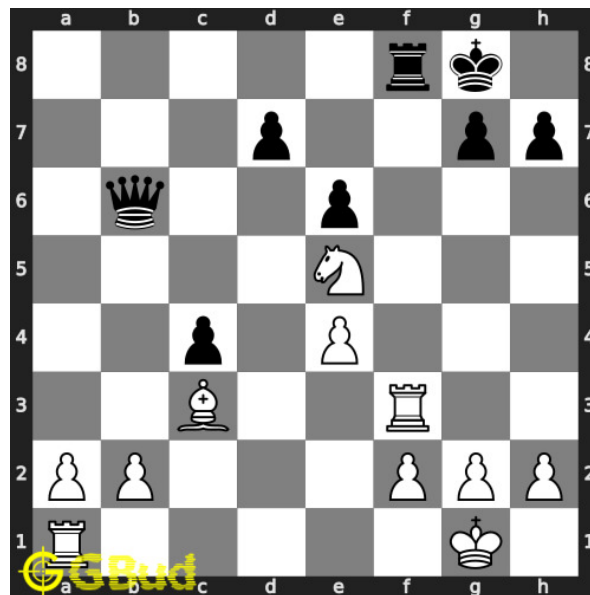


Figure 1: Solve this medium chess puzzle 0049. Gain queen @ <https://gbud.in/gr52gn2>



Figure 2: Solve this medium chess puzzle online with solution @ <https://gbud.in/gr52gn2>

Solution to medium chess puzzle 0049

At this puzzle, next **move** is by **White**. The objective of the puzzle is to gain queen.

See the interactive solution at the [puzzle page](#)

Solution 1

Initial board position This is the initial board position of medium chess puzzle 0049.

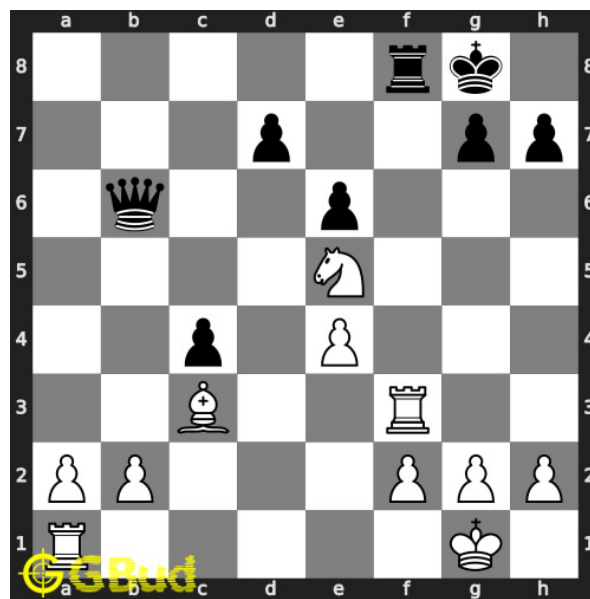


Figure 3: Initial board position of medium chess puzzle 0049

Move 1 Move by white

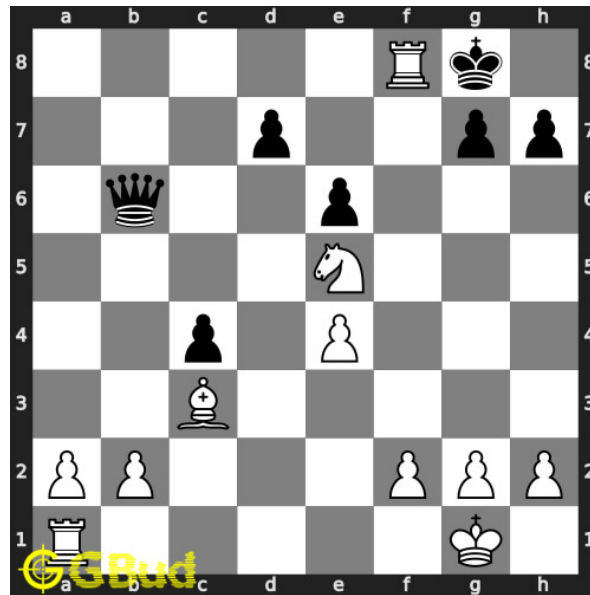


Figure 4: Rxf8+ - This sacrifice is an attraction as well as zugzwang move since this forces the king to move a vulnerable square

Move 2 Move by black

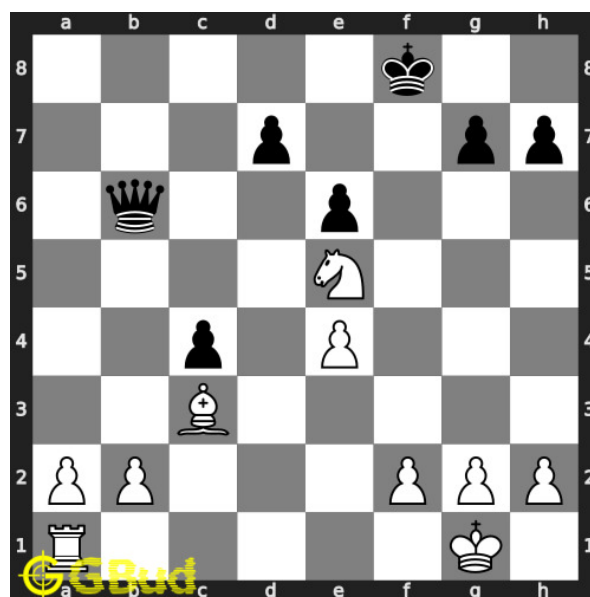


Figure 5: Kxf8 - King captures the rook as this is the only move available

Move 3 Move by white

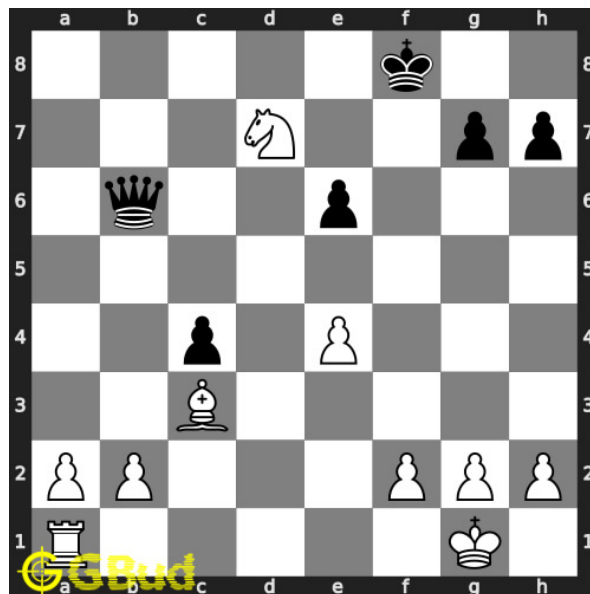


Figure 6: Nxd7+ - In this knight fork, the knight attacks both the king and queen at the same time by giving a check

Move 4 Move by black

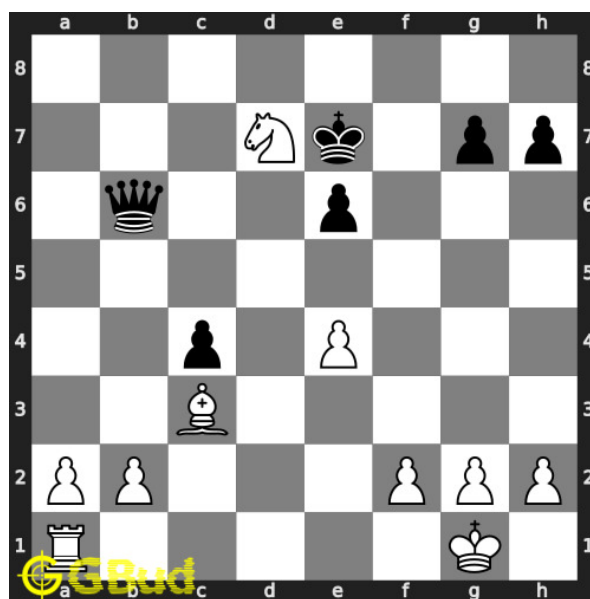


Figure 7: Ke7 - King moves closer to the knight

Move 5 Move by white

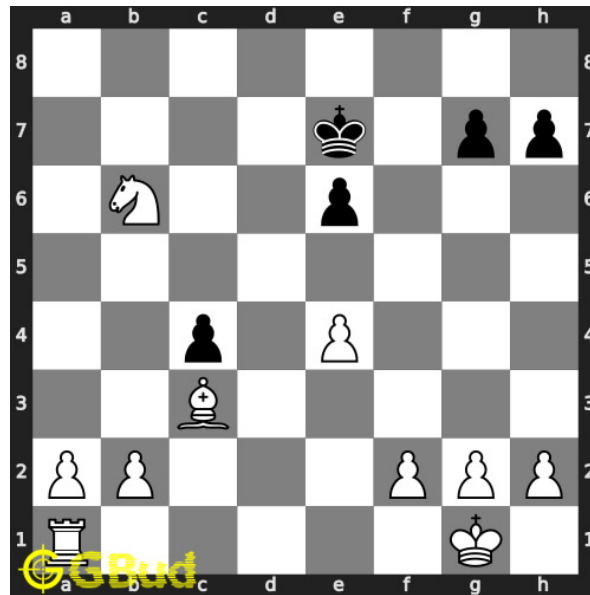


Figure 8: Nxb6 - Knight captures the hanging queen

Right moves for the solution to the medium chess puzzle 0049

Based on the objective of the puzzle, you have to make the right moves. Following are the right moves

1. Rxf8+, Nxd7+, Nxb6

Explanation for the moves

1. Rxf8+ - This sacrifice is an attraction as well as zugzwang move since this forces the king to move a vulnerable square
2. Nxd7+ - In this knight fork, the knight attacks both the king and queen at the same time by giving a check
3. Nxb6 - Knight captures the hanging queen
4. Kxf8 - King captures the rook as this is the only move available
5. Ke7 - King moves closer to the knight
6. For right move - You have lost a rook but gained a rook and a queen. You are materially advantageous now.
7. For wrong move - You could have used the knight and the rook to gain the queen. Do not stop trying

Categories of medium chess puzzle 0049

This medium chess puzzle falls in these categories.

1. [Medium chess puzzles](#)
2. [Sacrifice puzzles in chess](#)
3. [Gain puzzles in chess](#)
4. [Fork puzzles in chess](#)
5. [Strategy puzzles in chess](#)
6. [Zugzwang puzzles in chess](#)

How to view the solution to medium chess puzzle 0049

To view the [solution to this puzzle](#), follow the steps given below

1. Go to the [puzzle page](#)
2. Click the solution button (Key as shown [below](#)) to view the solution



Figure 9: Click the solution button to view solutions @ <https://gbud.in/gr52gn2>

How to get help for moves in the medium chess puzzle 0049

To get help or the possible next moves in the puzzle, , follow the steps given below

1. Go to the [puzzle page](#)

2. Click the help button (exclamation mark as shown [below](#)) to get help or suggestion on next possible [move](#)



Figure 10: Click the help button to get help on next move @ <https://gbud.in/gr52gn2>



Figure 11: Solve more medium puzzles @ <https://gbud.in/chsmdpz>



Figure 12: Solve other puzzles @ <https://gbud.in/chsgppz>

Play chess for free

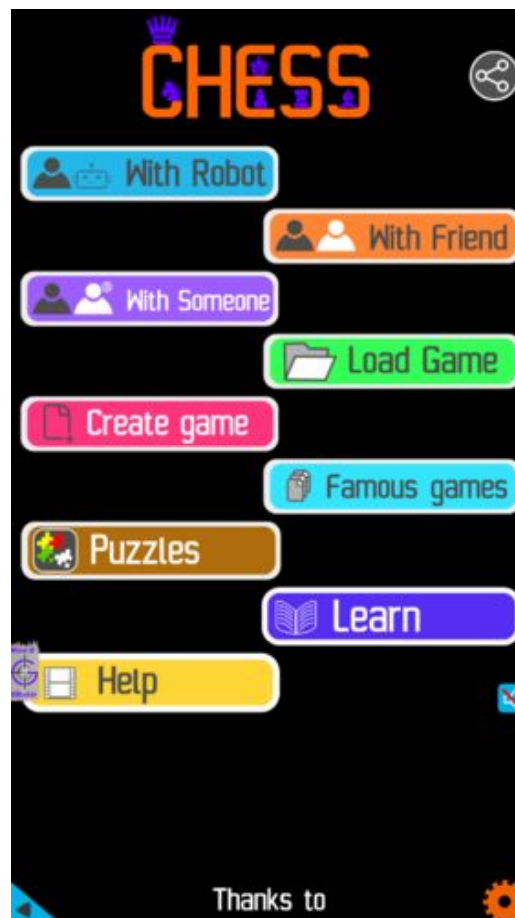


Figure 13: Play chess online for free. Solve puzzles and play with friends

Play chess for free at <https://gbud.in/chs>

We present you a platform to play chess online with friends for free. No need to install any app. You can play chess for free without registration or login.

Simple. You can do several chess related activities.

1. [solve chess puzzles](#)
2. [learn about chess](#)
3. [play chess with computer](#)
4. [play chess with friend](#)
5. [create your own chess games](#)
6. [fen viewer](#)
7. [fen editor](#)
8. [fen generator](#)
9. [pgn viewer](#)
10. [chess board editor](#)

11. [view famous chess games.](#)



Figure 14: Solve this puzzle online by scanning this QR code or go to the link below

<https://gbud.in/gr52gn2>

Read the latest article on Medium Chess puzzle # 0049 - Gain queen by scanning this QR code or click the link

Previous article : [« Medium Chess puzzle # 0048 - Mate in 3 moves](#)

Next article : [Medium chess puzzles »](#)

[Back to top](#)

[Contact Us](#)

© GBud Games 2021